



Midlands Partnership University  
NHS Foundation Trust

## Celebrating becoming a University NHS Trust



*Dr Paul Campbell, Senior  
Researcher at MPFT &  
COAST project lead*

*COAST is a MPFT 12-month project in collaboration with Keele University. COAST, started in April 2025, is funded by the NIHR West Midlands Secure Data Environment (WM SDE).*



[mpft.nhs.uk](https://mpft.nhs.uk)

Together we are making life better for our communities

@mpftnhs

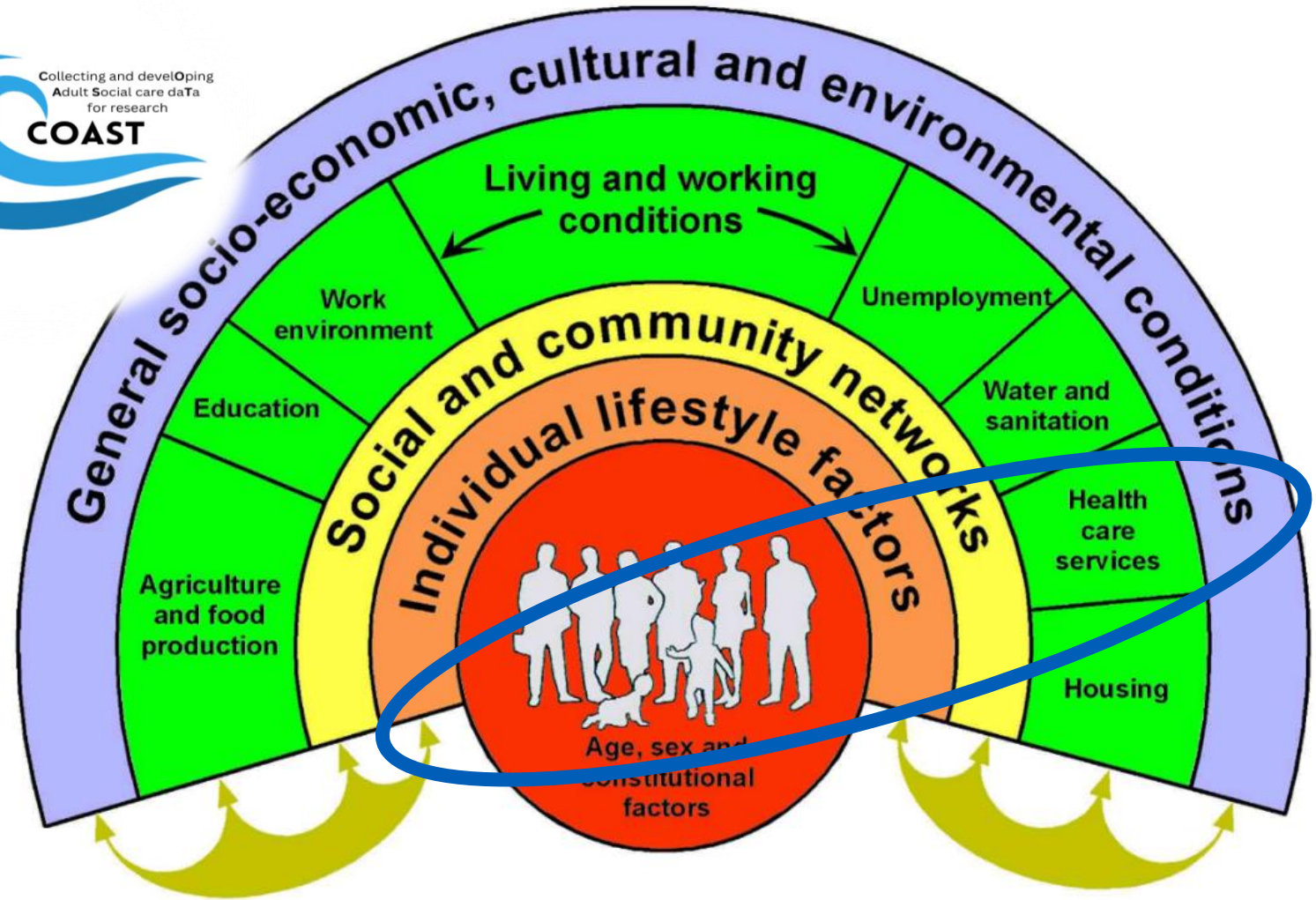


- Use of EHR data for research is **well accepted** by the public
- EHR use is **quick, low cost, and available**
- EHR use has led to **direct improvements** for patients and services
- EHR use has led to significant **research capacity growth**



## HOWEVER...

- EHR data can be restrictive
- It doesn't give the "full picture" on the experience of "people" who are also patients
- Further data sources are needed to cover the "wider determinants of health"



# Context

## The case at MPFT?

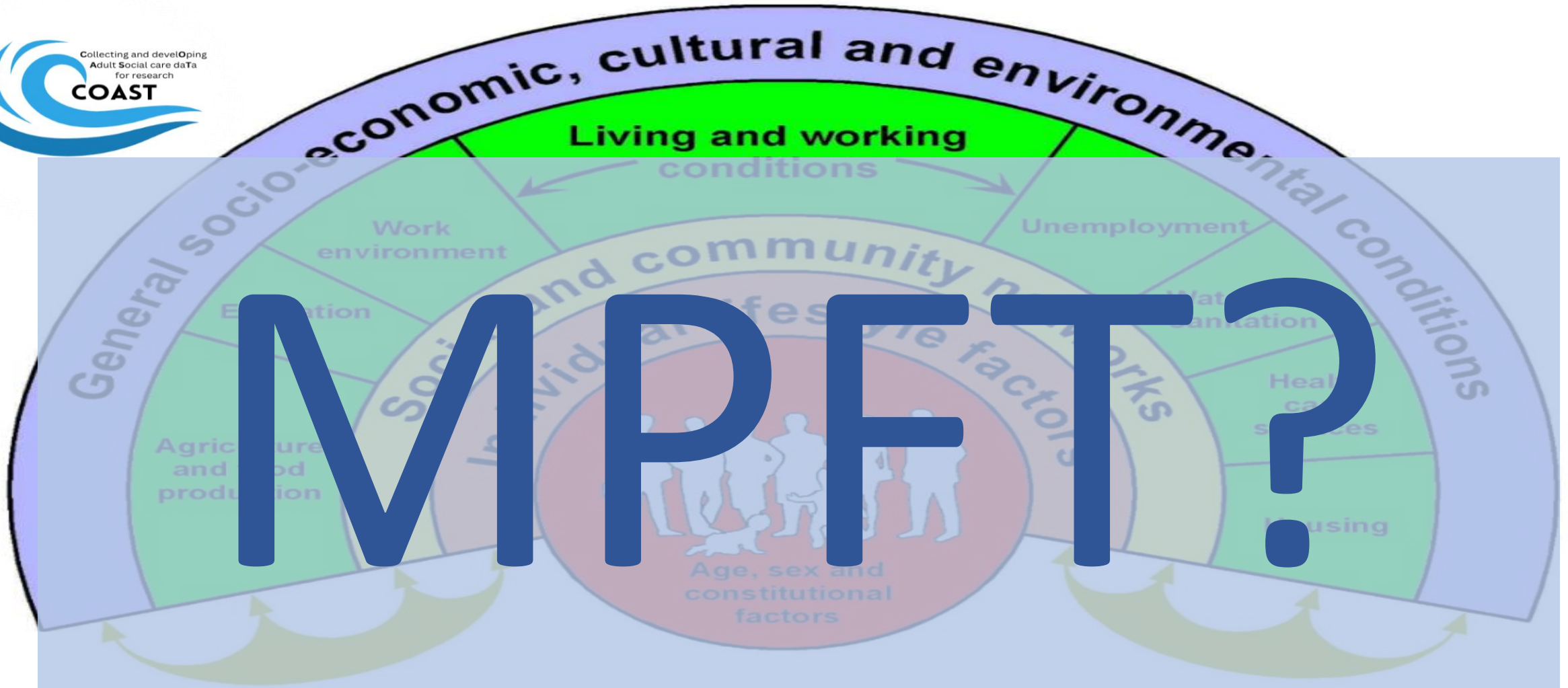
Serves a large population (1.7 million) -

- Adult Mental Health
- Adult Physical Health
- Adult Social Care
- Children and Families
- Specialist (Drug and Alcohol, Sexual Health)
- Learning Disabilities
- Health and Justice
- Psychological
- Public Health
- ...and many more



With future potential to link with local government services (e.g. **housing, education, environment, employment**), primary care services (**GPs, pharmacy**) and the Third Sector (**voluntary and community services**)





# MPFT?



# Step 1: Scoping project



- In 2023 we applied for funding to the NIHR CRN for the CELESTIAL project which had three key aims:

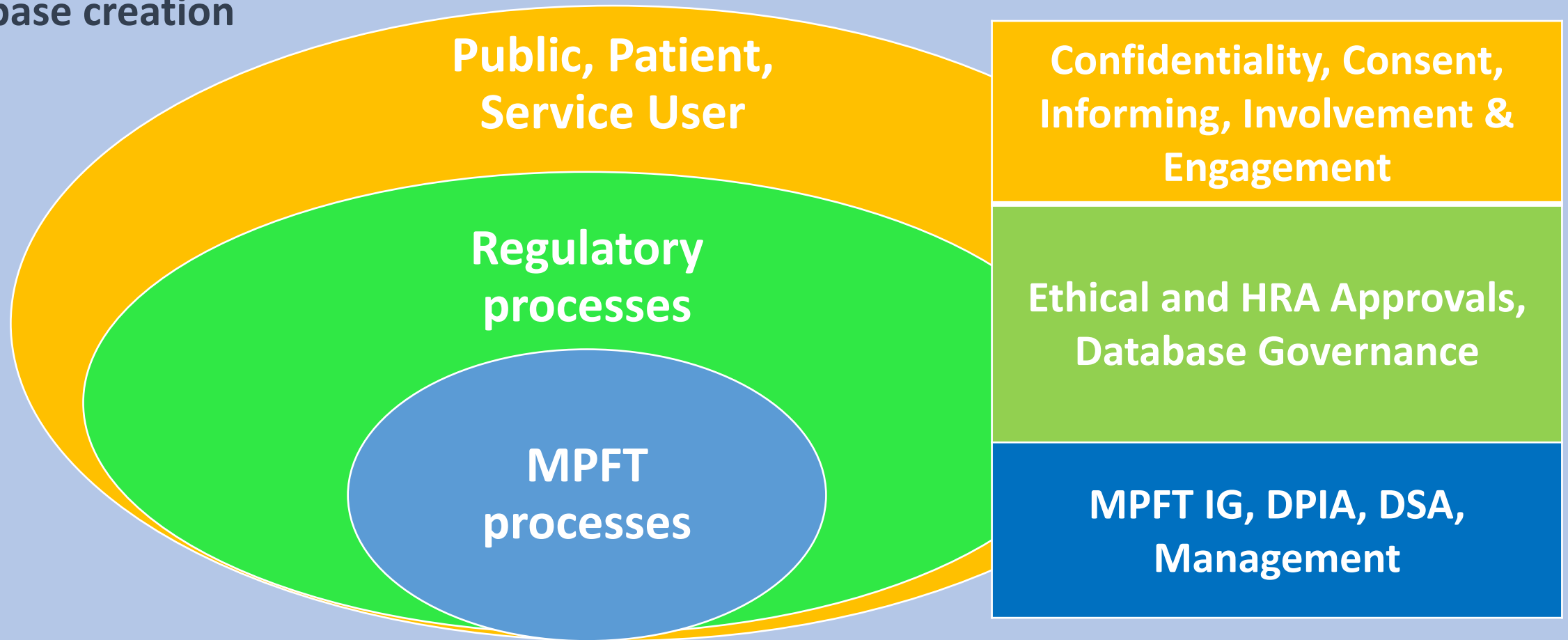
1. Understanding what processes are required for the creation of a database
2. Scope out the feasibility of using different service sector data for research
3. Test whether data from different sectors could be combined



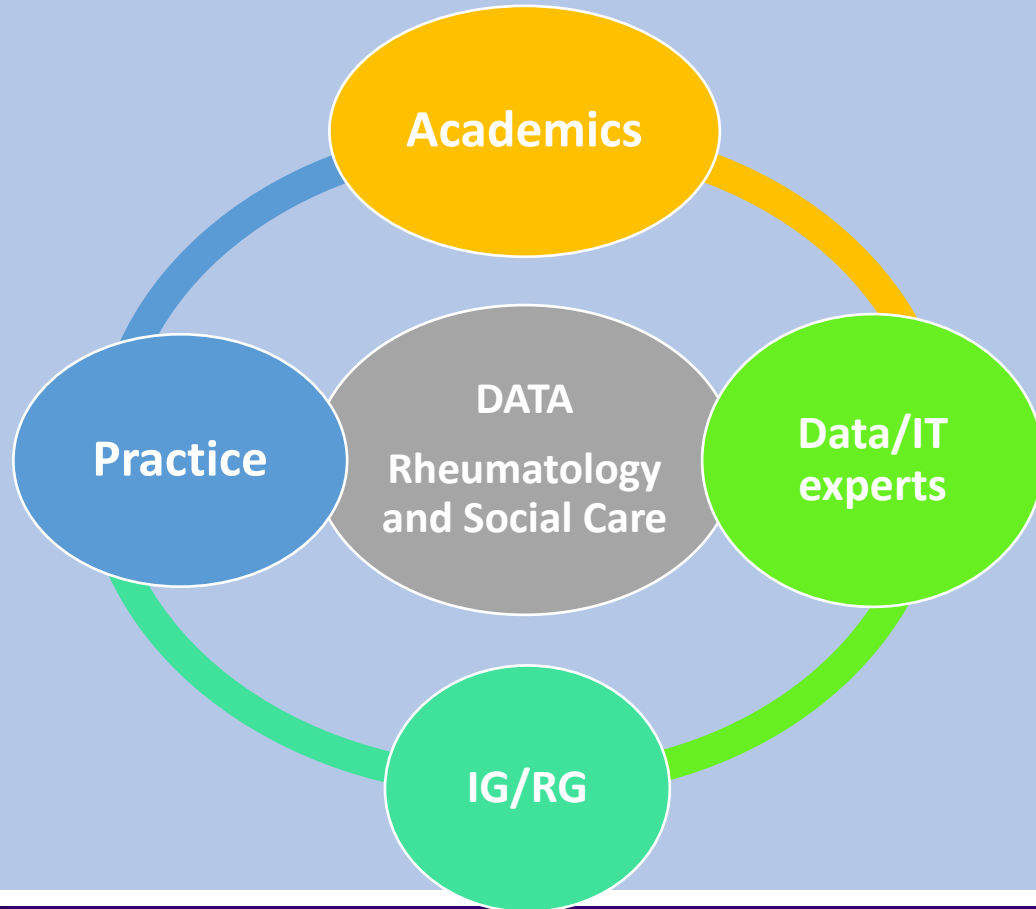
**Celestial Team:** *Toby Helliwell (Lead), Paul Campbell, Ian Scott, Frances Davis, Peter Newton, Tracie Bethell, Helen Duffy, Kelvin Jordan, Chris Ibell, Christian Mallen, Karen Nixon, Ruth Lambley-Burke*



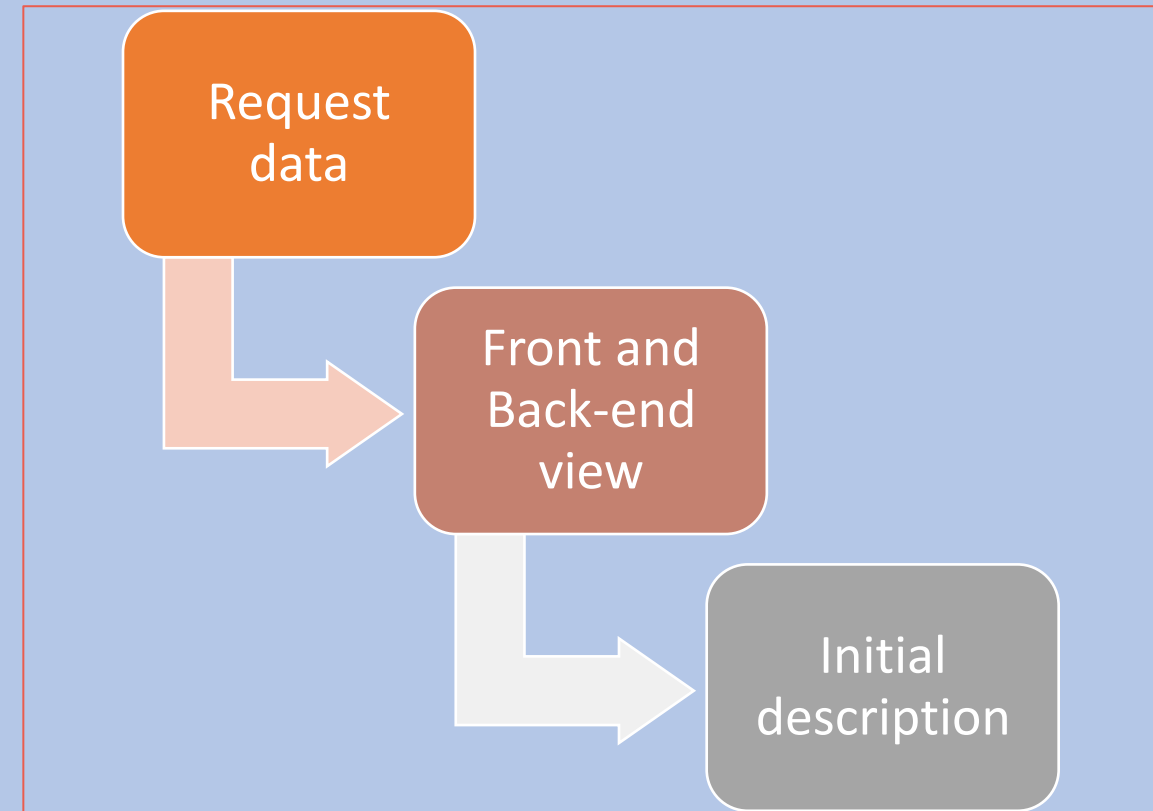
Understanding what processes are required for database creation



Scope out the feasibility of using different service sector data for research



## Portal (Rheumatology): Care Director (Social Care)



Identify process for how data from different sectors could be combined within a database

Live raw data

Extraction, linkage, domain

Rheumatology

Social Care

Data linkage and  
domain setting

## CELESTIAL

Understanding what processes (governance, ethical, regulatory) are required for data use for research



Test whether data from different sectors could be combined



Scope out the feasibility of using different service sector data for research



CELESTIAL showed that **some data is more “research ready” than others**

It was clear that further **understanding was required for adult social care data** in order for it to be used for research



# Step 2: Exploratory project- Adult Social Care Data



COAST's aim is to “to develop, describe and document the steps necessary to create a research-quality dataset from routinely collected social care electronic data”

COAST has 4 main objectives:

1. *Understand the data*
2. *Create an “Interactive Data Dictionary” (IDD) and researcher “Toolkit”*
3. *Create full stakeholder engagement*
4. *Create knowledge sharing and impact*



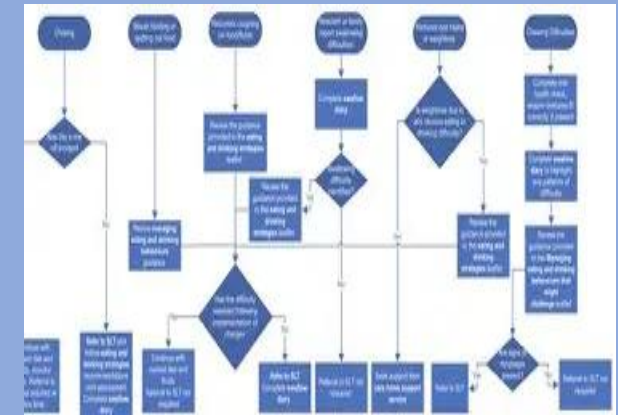
**COAST Team:** Paul Campbell, Toby Helliwell, Ian Scott, Frances Davis, Kelvin Jordan, James Bailey, Karen Nixon, Angela Lickorish, Jo Hinchliffe, Pauline Bonner, Christian Mallen, Ruth Lambley-Burke



# What sort of data is collected in ASC?

- **First contact/referral** (e.g. family member, GP, emergency services)
- **Initial screening/triage** (to determine what level of care and urgency is required)
- **Needs assessment** (understand the person’s needs, goals, and outcomes, often involves the person, their family and other professionals)
- **Eligibility checks** (to open up a care plan or to give advice and further guidance)
- **Care and support plan** (based around a person-centred approach with planning that considers needs and outcomes, services and support to be provided)
- **Financial assessment** (full, partial or self funding)
- **Support plan activated** (arrangements made for service provision)
- **Case review and monitoring** (6 to 8 weeks and then annual)

**Special considerations** – Safeguarding, mental capacity, advocacy



## Component 1 - Understand the data

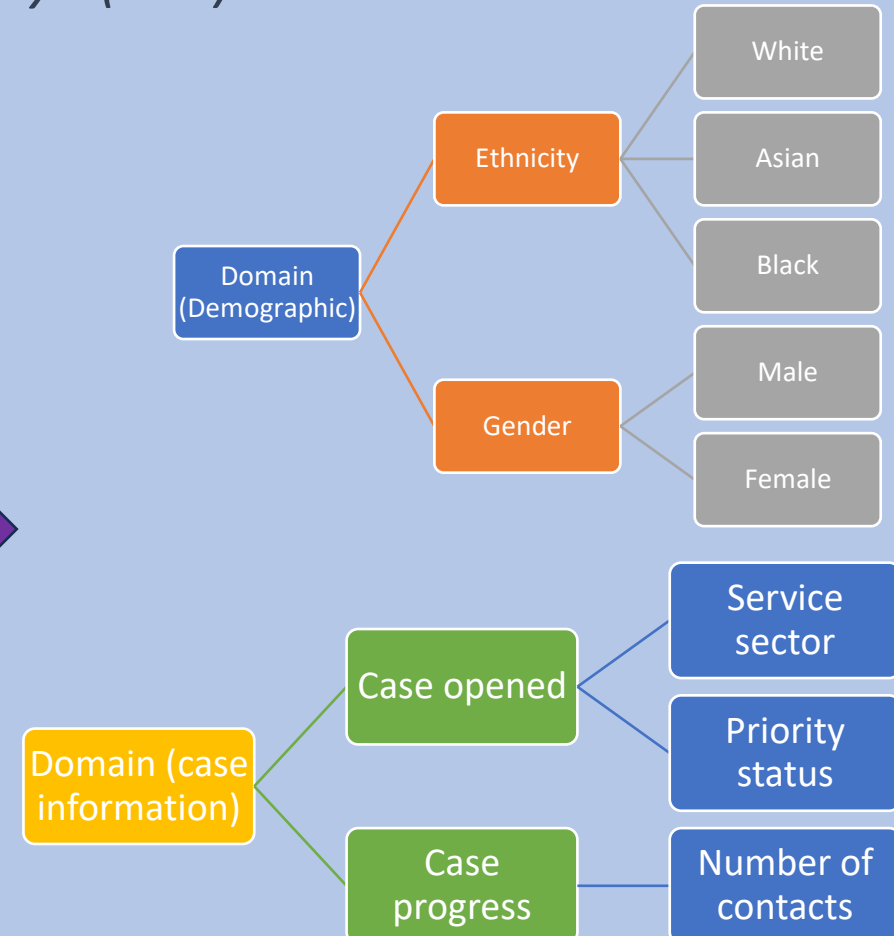
Raw data description	Understanding	Create data variable
Gender (e.g. Male, Female), Marital Status (e.g. single, co-hab, married, divorced), Age banding etc	<b>Yes</b>	Like for like (with tweaks)
Accommodation Status (e.g. settled, unsettled), Key primary support reason (e.g. mental health, sensory, learning disability)	<b>Partial</b>	Further work needed to translate
LT and SALT status (e.g. community, residential), Case Priority (e.g. standard, critical, urgent)	<b>No</b>	Further engagement needed from practice to understand circumstances



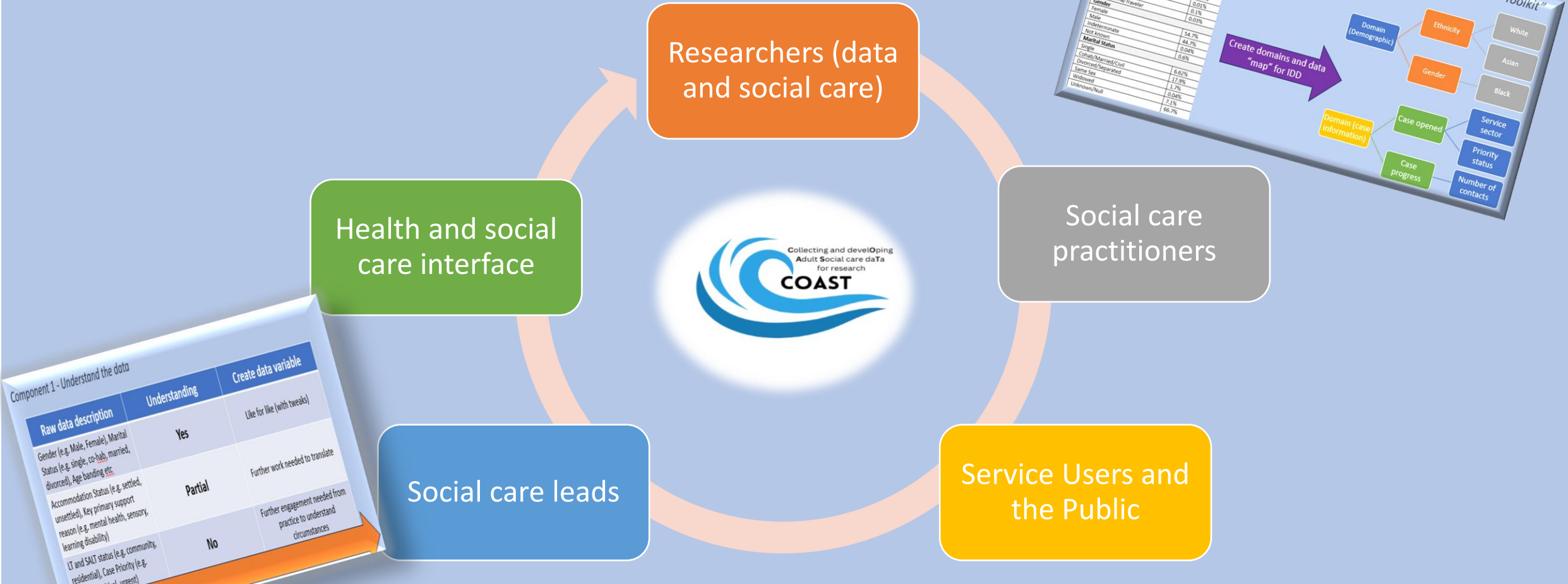
## Component 2 - Create an “Interactive Data Dictionary” (IDD) and researcher “Toolkit”

Field	% or descriptive
<b>Ethnicity</b>	
White British/Irish/Other (can be sub-categorized)	79.03%
Refused/Null/Not Stated/Not collected	18.56%
Mixed (White, Asian, Black, Any other)	0.43%
Asian (Indian, Pakistani, Bangladesh)	1.02%
Black (African, Caribbean, Other)	0.51%
Arabic	0.01%
Chinese	0.1%
Gypsy/Roma/Traveler	0.03%
<b>Gender</b>	
Female	54.7%
Male	44.7%
Indeterminate	0.04%
Not known	0.6%
<b>Marital Status</b>	
Single	6.62%
Cohab/Married/Civil	17.9%
Divorced/Separated	1.7%
Same Sex	0.04%
Widowed	7.1%
Unknown/Null	66.7%

Create domains and data  
“map” for IDD



## Component 3 - Create full stakeholder engagement



Component 2 - Create an "Interactive Data Dictionary" (IDD) and researcher "Toolkit"

Field	% or descriptive
<b>Ethnicity</b>	
White British/Irish/Other (can be sub-categorized)	79.01%
Mixed (White, Asian, Black, Any other)	18.56%
Asian (Indian, Pakistani, Bangladesh)	0.43%
Black (African, Caribbean, Other)	1.02%
Arabic	0.51%
Chinese	0.01%
Cypriot/Other/Traveler	0.1%
<b>Gender</b>	
Female	0.03%
Male	54.7%
Indeterminate	44.7%
Not known	0.04%
<b>Marital Status</b>	
Single	0.6%
Co-habiting/Married/Civil	6.62%
Divorced/Separated	17.9%
Same Sex	1.2%
Widowed	0.04%
Unknown/Null	7.1%
	96.7%

Create domains and data "map" for IDD

- Domain (Demographic)
  - Ethnicity
    - White
    - Asian
    - Black
  - Gender
    - Service sector
    - Priority status
    - Number of contacts
- Domain (case information)
  - Case opened
  - Case progress

Component 1 - Understand the data

Raw data description	Understanding	Create data variable
Gender (e.g. Male, Female), Marital Status (e.g. single, co-hab, married, divorced), Age banding etc	Yes	Use for like (with tweaks)
Accommodation Status (e.g. settled, unsettled), Key primary support reason (e.g. mental health, sensory, learning disability)	Partial	Further work needed to translate
LT and SALT status (e.g. community, residential), Case Priority (e.g. standard, critical, urgent)	No	Further engagement needed from practice to understand circumstances

## Component 4 - Create knowledge sharing and impact

Component 1 - Understand the data

Raw data description	Understanding	Create data variable
Gender (e.g. Male, Female), Marital Status (e.g. single, co-hab, married, divorced), Age banding etc.	Yes	Like for like (with toolkit)
Accommodation Status (e.g. self-help, sheltered), Key primary support reason (e.g. mental health, sensory, hearing disability)	Partial	Further work needed to translate
IT and S&T data (e.g. community, residential), Case Priority (e.g. standard, critical, urgent)	No	Further engagement needed from practice to understand circumstances



Meetings and stakeholder events/workshops

Agree and finalise COAST outputs (IDD, toolkit)

Explore how practice could improve data quality (future proofing)

Discuss how a database could be created (MPFT and beyond)

Identify one or two key research questions with local impact as exemplars for further funding

Dissemination: webpage, networks (local and regional), conferences, publications





Thank you!