

HDR UK MIDLANDS ANNUAL CONFERENCE 2025

Data for Digital Health: Next Generation

Thursday 11th – Friday 12th September 2025

Charnwood Campus Science, Innovation and Technology Park,
Bakewell Rd, Loughborough, East Midlands,
LE11 5RB

e-Delegate pack

Health Data Research UK Midlands
www.hdrmidlands.org.uk

#HDRUKMIDS25



[@HDRMidlands](https://twitter.com/HDRMidlands)



[@hdrukmidlands.bsky.social](https://bsky.app/profile/hdrukmidlands.bsky.social)



[@Health Data Research UK Midlands](https://www.linkedin.com/company/health-data-research-uk-midlands)



[@HDRMidlands](https://www.youtube.com/channel/UC...)

Health Data Research UK Midlands Annual Conference 2025

Data for Digital Health: Next Generation

AGENDA

Date & Time: Thursday 11th September 2025 | 12pm –5pm

Location: Charnwood Campus Science, Innovation and Technology Park, Bakewell Road, Loughborough, LE11 5RB

Day 1: The UK as a Global Leader			
Time	Session	Who	Aims
12:00	Arrival, Registration Lunch and Networking	All delegates	Registration, delegate packs, lunch, exhibitions & networking
13:00	Welcome, Introductions and overview of the HDR UK Midlands Annual Conference 2025	Dr Fiona Pearce & Mr Kevin Dunn Co-Directors: HDR UK Midlands	Welcome and housekeeping Introduction to Health Data Research UK Midlands Overview of the conference
13:15	Data and Technology in Health and Care: Conference Theme Outline	Professor Eiman Kanjo, Professor of Pervasive Computing, Nottingham Trent University	Technology supporting health and care. Digital Health and Data in Healthcare – The Future
Session 1: Global Opportunities for Digital Health			
13.30	National Strategic Direction	Dr Rhoswyn Walker, Director of Strategy, Health Data Research UK	The evolving landscape, future opportunities and Health Data Research UK (HDR UK)
13:50	A Global Perspective	Thomas Basikolo, United Nations	The global mission and developments across the United Nations
14:30	Wearable Computing in Medicine: Reimagining Cardiovascular Care at the Edge	Professor Fahim Kawsar, Co- Founder and Chief Technology Officer of OmniBuds	AI and digital opportunities
14:30	Panel Discussion & Q&A – What are the next steps for the UK Sector? What can we learn?	Chair: Dr Dale Eslinger, Professor in Digital Health Technologies, Loughborough University	Panel: Speakers from above Eiman Kanjo (representing Midlands Universities)
14:45	BREAK		
Session 2: Regional Showcase			
15:15	PIONEER and Secure Data Environments (SDEs)	Professor Elizabeth Sapey, Director of PIONEER, Health Data	Secondary care data across the Midlands region

		Hub in Acute Care at University of Birmingham	
15:25	Assisted data and technology	Professor Praminda Caleb-Solly, School of Computer Science, University of Nottingham	Data and technology around the individual
15:35	Medical Technologies Innovation Facility (MTIF)	John Hunt, Medical Technologies Innovation Facility (MTIF)	Data and digital health, social prescribing.
Session 3: Funding Opportunities			
15:45	Introduction to session	Professor Eiman Kanjo, Professor of Pervasive Computing, Nottingham Trent University	Introduce funding session.
15:45	Funding opportunities 1 – Innovate UK	Mr James Silverward - Innovate UK	Overview of funding opportunities Focus, Upcoming Calls. Feedback.
16:00	Funding Opportunities 2 - Engineering and Physical Sciences Research Council (EPSRC)	Dr Katherine Freeman, Senior Portfolio Manager at EPSRC	Overview of funding opportunities Focus, Upcoming Calls. Feedback.
16:15	Funding Opportunities 3 - NIHR	Dr. Helen Compton, Stakeholder Engagement Manager at NIHR Coordinating Centre	Overview of funding opportunities Focus, Upcoming Calls. Feedback.
16:30	Funding opportunities 4 – Wellcome Trust	Dr John Chevers, Technology Lead at Wellcome Trust	Overview of funding opportunities Focus, Upcoming Calls. Feedback.
16:45	Panel Q&A with Funders: Exploring various project ideas	Main Room Chair: Professor Eiman Kanjo, Professor of Pervasive Computing, Nottingham Trent University	Regional funding opportunities and innovative applications
17:00	CLOSE		

Health Data Research UK Midlands Annual Conference 2025

Data for Digital Health: Next Generation

AGENDA

Date & Time: Friday 12th September 2025 | 10am – 4pm

Location: Charnwood Campus Science, Innovation and Technology Park, Bakewell Road, Loughborough, LE11 5RB

Day 2: Driving the Sector from the Midlands			
Time	Session	Who	Aims
09:00	Arrival, registration and networking	All delegates	Registration, delegate packs, refreshments, exhibitions & networking
10:00	Welcome, Introductions and an overview of Health Data Research UK Midlands	Dr Fiona Pearce & Mr Kevin Dunn Co-Directors: HDR UK Midlands	<ul style="list-style-type: none"> Welcome and housekeeping Introduction to Health Data Research UK Midlands
10:05	Importance to patients and the public	Claire Robotham. Patient and Public Representative, East Midlands	Benefits of data and technology from a patient perspective
10:15	HDR UK Overview and strategic direction	Dr Rhoswyn Walker, Director of Strategy, Health Data Research UK	HDR UK National Outlook and opportunities
Session 1: Route to Implementation			
10:30	Regulation and governance of AI	Dr Ankeet Tanna, Hardian Health	Regulation and implementation
10:45	Adoption across the NHS	Dr Tom Micklewright, Medical Director at ORCHA Health UK	Regulation and implementation
11:00	Diabetes Data Rights Charter	Dr Louise Hatherall, Research Fellow at University of Birmingham	An opportunity to develop principles to guide diabetes data governance moving forward
11:15	BREAK		
Session 2: Challenges and Opportunities			
11:45	Workshop discussion: What are the biggest challenges and barriers?	Facilitators <ul style="list-style-type: none"> Main Room - Data & Data Sharing Building 42 – Technology that produces data 	2 x areas Discussing barriers around: <ul style="list-style-type: none"> Data & Data Sharing Technology that produces data
12:25	Live debate and Q&A	Chair: Dr Rob Free, Lecturer in Health Data Science at University of Leicester	Summarising discussions from workshops (Main Room)
12:45	LUNCH & NETWORKING		

Session 3: Innovation Showcase – 6 x lightning talks – A call for speakers!			
13:45	Conference Photograph	All delegates	Outside building 21 or Main Room
13:45	Integrated Virtual Humans in Healthcare	Professor Jim Ang, School of Computing (Kent), Kent and Medway Medical School	To explore how integrated virtual humans can enhance healthcare delivery, education, and patient engagement.
13:50	MoveR Wearable: Low-cost and Research-Friendly	Professor Kianoush Nazarpour of Digital Health, University of Edinburgh	To present MoveR, a low-cost and research-friendly wearable designed to support accessible and scalable health research and innovation.
13:55	Federating Data Across Borders	Jonaa Eva, Project and Outreach Senior Manager, HDRUK Federated Analytics Programme, University of Nottingham	The HDR UK Federated Analytics programme is transforming how sensitive data is securely analysed
14:00	Health Determinants Research Collaboration Coventry: Creating a Data Catalogue in a Local Authority	Chloe Ryder, Research Fellow in Quantitative and Mixed-Methods, Coventry Health Determinants Research Collaboration (HDCR)	Report on the development of a data catalogue at HDRC Coventry, as part of pillar one work surrounding data and governance.
14:05	Towards Real-Time, Algorithm-Driven Clinical Decision Support in General Practice	Kerry Oliver, Managing Director, PRIMIS at the University of Nottingham	The PRIMIS Decision Support solution is a digital tool in design to integrate evidence-based clinical algorithms with GP IT systems.
14:10	PRE-ACT: Prediction of Radiotherapy side-effects using explainable AI	Adam Webb, Senior Research Associate Department of Genetics, Genome Biology and Cancer Sciences, University of Leicester	PRE-ACT is a multi-centre European study involving Leicester (UK) that is using Artificial Intelligence (AI) to predict long-term side effects from radiotherapy in breast cancer patients
14:15	Panel Q&A	Chair: Professor Eiman Kanjo, Professor of Pervasive Computing, Nottingham Trent University	Panel Q&A
Session 4: Collaboration Opportunities			
14:30	From Discovery to Venture: The Midlands Mindforge Approach	Dr Lisa Smith CEO, Midlands Mind Forge	Share how Mindforge helps turn research into high-growth companies.
14:40	Workshops: Exploring various project ideas	Workshop 1 - Main Room AI and Wearables	Workshop 2 - Building 42 Data, Data Sharing and Infrastructure
	Workshop discussion: Exploring project ideas	Facilitators <ul style="list-style-type: none"> Main Room – AI and Wearables Building 42 – Data, Data Sharing and Infrastructure 	2 x areas Discussing opportunities around: <ul style="list-style-type: none"> AI & Wearables Data, Data Sharing and Infrastructure
15:15	Summaries from workshops	Facilitator: Joe Shearring, Head of Regional Engagement at EPSRC Feedback from workshops	Collaborative opportunities, feedback and discussions from workshops
15:50	Reflections and next steps	Dr Fiona Pearce & Mr Kevin Dunn, HDR UK Midlands & Professor Eiman Kanjo, Nottingham Trent University	Summary of the conference and next steps for the Midlands region
16:00	CLOSE		

Speaker biographies

Dr Fiona Pearce

Co-Director, HDR UK Midlands

Fiona Pearce is an NIHR Advanced Fellow, and Clinical Associate Professor in Rheumatology Epidemiology at the University of Nottingham. She holds an honorary position as a consultant rheumatologist (autoimmune arthritis specialist) at Nottingham University Hospitals NHS Trust, and as an honorary consultant within the Rare Disease Team at the National Disease Registration Service in NHS England.



Fiona's research interests are centred around rare autoimmune rheumatic diseases, such as vasculitis, lupus and scleroderma. She has a particular interest in using routinely collected healthcare data to improve the lives of people with rare diseases. She is interested in developing ways to conduct health data research in rare diseases using whole population approaches and to make this scalable to all 5000 rare diseases. She works with HDRUK and other relevant organisations to develop health data research capacity in rare diseases.

Fiona's specialist interests within rheumatology epidemiology are the occurrence, natural history and treatment outcomes of rare autoimmune rheumatic diseases. She was awarded a Versus Arthritis clinical research fellowship and completed her PhD on the "The epidemiology and natural history of ANCA-associated vasculitis in the UK: a response to The UK Strategy for Rare Diseases" in 2018. She leads the [RECORDER](#) collaboration with the Rare Disease Team at the National Disease Registration Service in NHS England. She holds an NIHR advanced fellowship, "Using Health Data Science and large-scale data to improve the lives of people with rare autoimmune rheumatic diseases and other rare diseases." Her epidemiology work is currently describing national epidemiology of rare autoimmune rheumatic diseases, and effects of COVID-19 in immunosuppressed populations.

She regularly publishes research papers in scientific journals and has contributed a book chapter to the Oxford Textbook of Medicine.

Fiona's motivation, whether in research or in the clinic, is to improve the care of patients with rare autoimmune diseases.

Mr Kevin Dunn

Co-Director, HDR UK Midlands

Kevin is Co-Director of [HDR UK Midlands](#) regional network, which is a network that brings together NHS, academic, industry and third sector to promote and support the use of health related data to improve NHS services for patients.

Kevin started his career in the NHS as a Youth Trainee in 1998. Since this time, he has gained experience mainly in the fields of Health Informatics, Oncology, Research & Development and Innovation Management.



He was one of the initial recruits to the National Cancer Research Network (NCRN) which was formed in 2001 and designed one of the first regional databases for capturing and monitoring clinical trial recruitment data. Kevin has a degree in Business Management and also holds a Masters degree in Business Administration (MBA).

With a passion for innovation, Kevin set up the first ever ‘national’ cancer multidisciplinary team (MDT) for the diagnosis and treatment of Ewing’s Sarcomas. He was formerly Head of Research, Innovation and Clinical Audit for a Specialist NHS Trust and has spent a lot of his career teaching Good Clinical Practice (GCP) across the region for healthcare professionals and academics involved in Clinical Research. In recognition for this, Kevin was previously a question setter and adjudicator for the Royal College of Physicians, Faculty of Pharmaceutical Medicine.

With a passion for learning, Kevin teaches on the Health Data Fundamentals module, as part of the MSc Health Data Science Masters programme at the University of Birmingham. He also set up the apprenticeship programme within the research delivery team at University of Birmingham, giving local young people opportunities to obtain a career in the world of health research. As part of his role within HDR UK, Kevin set up the [Midlands CCIO network](#), which is a forum for clinical leadership across the region who are responsible for digital transformation, to learn from each other and share best practice.

Additionally, Kevin helped to establish and provides strategic support to the [TARGetAMR research network](#), which is a transdisciplinary research network funded by UKRI that focuses on combating antimicrobial resistance through genomics and fostering interdisciplinary collaboration.

Outside of work, Kevin is involved with a local Ramblers charity group, which involves organising and leading group walks and weekends away. Kevin is also the former Chairman of New Cross Hospital Kidney Patients Association, a registered charity that raises money for patients with kidney failure. Kevin also enjoys photography, cooking, running, gardening, travelling and practicing yoga. Namaste!

Kevin is ambitious, creative and visionary and is determined to transform our NHS for the benefit of patients.

Professor Eiman Kanjo

Provost's Visiting Professor, Imperial College London

Head of Smart Sensing Lab, Nottingham Trent University

Prof. Eiman Kanjo is a Professor of Pervasive Sensing and the head of the [Smart Sensing Lab](#), at Nottingham Trent University. She has recently been honoured as one of the Top 50 Women in Engineering by the Women in Engineering Society. Prof. Kanjo is also the academic of the NTU-Turing University Network. With extensive experience, she has over 120 publications and she won several grants from various funders, including DCMS (5G Connected Forest, a £10m project in collaboration with Nottingham County Council and multiple industrial organizations), InnovateUK, EPSRC, DSTL, ERDF, MoD, and the Lottery Fund. Prof. Kanjo is dedicated to working closely with charities, local authorities, and industry. Eiman works closely with tinyML Foundation and currently serves on the steering committee for tinyML EMEA, She is also an editor at Data Centric Engineering Journal.



Eiman’s research focuses on creating technological solutions for the development of self-management and self-referral tools at both individual and community levels. To achieve this, she leverages privacy-preserving AI implemented in wearable devices, TinyML tools, and mobile phones. By processing data directly at the point of need, such as in managing diabetes, physical activities, addiction, loneliness, stress, and anxiety, her goal is to minimize reliance on medication and hospital admission.

Furthermore, her team has successfully implemented a community-based [Green Social Prescribing initiative](#) at Rufford Country Park and Highbury Mental Health Hospital. Additionally, Eiman’s team has collaborated with Nottingham City Council and DEFRA to deploy a network of air quality monitoring devices throughout

Nottingham City Centre. These devices have been fully set up to ensure accurate and continuous monitoring of air quality in the area.

Dr Rhoswyn Walker

Director of Strategy at Health Data Research UK

Rhos Walker joined [HDR UK](#) in June 2018 from the Medical Research Council (MRC), having provided strategic leadership to scope and create HDR UK. Initially as Chief Science Strategy Officer, Rhos shaped the formation and led the establishment of HDR UK's interdisciplinary research programmes. This included working with the Institute's research teams across the UK to lead the transformation of the Institute's geographically dispersed activities into six strategic national research priorities, including Understanding Causes of Disease, Improving Public Health, Better Clinical Trials, Better Care, Human Phenome and Applied Analytics.



Rhos led a refresh of HDR UK's capacity building strategy and held responsibility for the Institute's training programmes from December 2019 to September 2022. She also led the collaborative scoping and grant funding submission that resulted in the formation of the BHF Data Science Centre in October 2019.

From December 2021 to December 2022, Rhos was made Senior Responsible Officer overseeing HDR UK's 5-year core-funding renewal and provided overall co-ordination and leadership of the Institute's core-funding award, which provides the foundation for all of the Institute's activities. She worked with research leaders across the UK to shape a coherent strategy for the Institute's second five years and led the dialogue with HDR UK's nine core funders to secure their significant ongoing investment.

Now as Director of Strategy, Rhos works with the Institute Director and Senior Leadership Team to ensure HDR UK's strategy and delivery priorities align with HDR UK's mission to unite the UK's data to make discoveries that improve people's lives. This includes supporting new partnerships and securing additional funding to support the Institute's goals, while maintaining alignment with the Institute's existing programmes. Rhos is responsible for the management of a small team within the Institute's Director's Office, including responsibility for open science, research culture and impact.

Prior to joining HDR UK, at the MRC, Rhos held a diverse range of roles and responsibilities, frequently defined by the need to work in partnership across disciplines and sectors. This included responsibility for the MRC's data science strategy, drawing together disparate activities across population, molecular and computational research programmes, working across several other Research Councils, government and charitable funders. Other roles included management of MRC's cancer research, advanced microscopy and skills and training programmes, including supporting the skills needs of industry. Rhos' first role outside of academic research was a research funding and policy development role within a cancer research charity. She holds a PhD in molecular virology.

Thomas Basikolo

Programme Coordinator at United Nations

Thomas Basikolo is Programme Coordinator in the Study Groups and Policy Department of the ITU Telecommunication Standardization Bureau (TSB). He coordinates and manages the [AI for Good's](#) Machine Learning activities (including ML5G), is ITU lead of the [Green Computing Pillar](#) of the [Green Digital Action](#), and is an advisor to the ITU-T Focus Group on AI-Native Networks. Prior to joining ITU, he worked as a Research Engineer in the Engineering Department of Microwave Factory Co., Ltd, Tokyo, Japan.



He received a PhD in Electrical and Computer Engineering from Yokohama National University, Japan. He is recipient of multiple Best Paper Awards, the IEEE AP-S Japan Student Award and the Young Engineer of the year award by IEEE AP-S Japan in 2018.

He has co-authored peer-reviewed journal and conference papers, predominantly in the areas wireless communications and antenna engineering. He serves as a Reviewer of IEEE and IEICE Journals. His interests includes, machine learning, deep learning, artificial intelligence and network science, and their applications in wireless networks as well as how technology can be used to advance the UN SDGs.

Professor Fahim Kawsar

Co-Founder and Chief Technology Officer of OmniBuds AI

Professor Fahim Kawsar is the Co-Founder and Chief Technology Officer of [OmniBuds](#), a pioneering digital health company developing medical-grade ear-worn devices for real-time cardiovascular monitoring. He also holds a Professorship in Mobile Systems at the University of Glasgow, where his research spans Mobile and Ubiquitous Computing, with a particular focus on multi-sensory systems that learn, infer, and augment human health and wellbeing. Prior to founding OmniBuds, Fahim spent 15 formative years at Nokia Bell Labs, where he rose to the rank of Bell Labs Fellow and established the Bell Labs Cambridge site, which he led as Director of Device Research. During his tenure, he initiated breakthrough programmes in novel devices, embedded sensing, on-device learning, and human-centred AI. He also spearheaded the creation of a flagship research centre in collaboration with the University of Cambridge, advancing deep academic-industry partnerships. His work was instrumental in defining several transformative directions, including the emergence of Earable Computing as a new research frontier. Fahim's applied research has resulted in two successful spin-outs from Bell Labs. He has authored over 200 peer-reviewed publications, holds more than 50 patents, and has secured in excess of €6 million in research funding. He currently serves as Editor-in-Chief of IEEE Pervasive Computing and is a frequent keynote speaker, contributing to global discourse on embedded intelligence and the real-world deployment of AI systems.



Professor Dale Eslinger

Professor in Digital Health Technologies, Loughborough University

My research focuses on the skilled deployment of novel digital health technologies (e.g., wearables) to quantify the *dose-response* relationship between physical activity, sedentary behaviour, and health. I aim to robustly measure the dense phenotypes of study populations with a view to developing novel therapeutic paradigms for chronic lifestyle diseases. My research intersects traditional Exercise and Health Science disciplines with Medicine, Computer Science, and Engineering.



Professor Elizabeth Sapey

Director of PIONEER, Health Data Hub in Acute Care at University of Birmingham

Liz is a Professor of Acute and Respiratory Medicine at the University of Birmingham and an Acute and Respiratory Medicine Consultant at University Hospitals Birmingham NHS Foundation Trust. She is also the Director of the Institute of Inflammation and Ageing within the University of Birmingham and the President of the British Association for Lung Research.



Liz's research interests focus on inflammatory and infectious respiratory diseases associated with ageing, and the impact of inflammation during acute diseases. Liz's clinical work focuses her research, enabling her to recognise challenges within acute care provision and ensure patients are at the heart of addressing these issues. Increasing participation and reducing barriers to enable collaborative research remains one of Liz's passions, so that innovation reflects the diversity of the UK population.

As founder and Director of [PIONEER](#), the [HDR UK Hub in acute care](#), Liz continues the integration of traditionally siloed acute care healthcare providers, working with patients, NHS organisations, AI systems, academia and industry, to transform care provision and improve outcomes and choices for patients."

Professor Praminda Caleb-Solly

School of Computer Science, University of Nottingham

Professor Praminda Caleb-Solly specialises in assistive robotics and intelligent sensing. She is currently Professor of Embodied Intelligence at the University of Nottingham, where she leads the Cyber-physical Health and Assistive Robotics Technologies ([CHART](#)) research group.

She holds a BEng in Electronic Systems Engineering, an MSc in Biomedical Instrumentation Engineering, and a PhD in Interactive Evolutionary Computation. Prior to joining the University of Nottingham in September 2021, Professor Caleb-Solly was a Professor of Assistive Robotics and Intelligent Health Technologies at the Bristol Robotics Laboratory, University of the West of England, where she led the Robotics Engineering and Computing for Health Research Group and served as Associate Head of Department for Research and Scholarship.



From 2014 to 2018, she was Head of Electronics and Computer Systems at Designability, a not-for-profit organisation specialising in assistive technology design. Her research portfolio includes projects funded by Innovate UK, EPSRC, NIHR, AHRC, and the European Commission, focusing on the design and evaluation of socially and physically assistive robotics, and Internet of Things (IoT) sensor-based intelligent technology. Her work aims to assist people with disabilities and long-term conditions, as well as their caregivers, by supporting activities of daily living.

Professor Caleb-Solly is also the Academic Lead for the University of Nottingham at the National Rehabilitation Centre ([NRC](#)), and also a Technology Theme Lead at the National Institute for Health and Care Research [HealthTech Research Centre for Rehabilitation](#), contributing her expertise to advance rehabilitation research and innovation. She has also been leading the EPSRC Healthcare Technologies Network+ programme, [EMERGENCE](#), which has been facilitating the emergence of healthcare robots from labs into service.

Additionally, she is co-founder and director of [Robotics for Good](#), a Community Interest Company dedicated to deploying intelligent robotics and smart technology solutions that empower individuals in their daily lives.

Her academic contributions encompass machine learning and human-robot interaction, and she has co-authored the UK-Robotics and Autonomous Systems White Paper on Robotics in Social Care. She has also provided evidence to the UK House of Lords' Science and Technology Committee inquiry into Ageing: Science, Technology, and Healthy Living. Furthermore, Professor Caleb-Solly serves as a member of the British Standards Institute's Technical Committees on Robotics and Ethics for Robots and Autonomous Systems, and co-chairs the IEEE Robotics and Automation Society Technical Committee for Robot Ethics.

Professor John Hunt

Professor and Academic lead for Medical Technologies Innovation Facility (MTIF)

John Hunt is Professor of Clinical Sciences and the Academic lead for the Medical Technologies Innovation Facility ([MTIF](#)). He is a Deputy Director of the [Nottingham NIHR Clinical Research Facility](#) at Nottingham University Hospitals NHS Trust. His research focuses on engaging healthcare providers, industry and academia to develop medical technologies including digital technologies, wearables, real time metrics and diagnostics as well as Advanced Therapy Medicinal Products and cellular therapies, drawing in tissue engineering processes, biomaterials and regenerative medicine, aiming to address the key areas of patient treatments requiring intervention using material implantation or their role as communicating and self-reporting wearables. He has filed and licenced patents and started three companies as well as held positions of office in three more companies. His research has been funded by the governments of many different nations through their research funding programmes, as well as by charities and from direct commercial contract research.



John is a Fellow of the Royal Society of Chemistry and Ex-officio Chairperson of the committee for their specialist interest group Analytical Biosciences. He is a Fellow of the International College of Fellows for Biomaterials Science and Engineering and elected committee member. He has over 400 publication and his Orcid ID is 0000-0002-5168-4778. John is an Associate Editor of the Journal Biomaterials and a subject editor for the journal IJAO.

John would like to talk to innovators, entrepreneurs and commercial enterprises who have the drive and ambition to deliver on the future unmet health and care needs of humans and other animals.

Mr James Silverward

Regional Manager for the East Midlands at Innovate UK

James is the Regional Manager for the East Midlands at [Innovate UK](#), working in their Place & Global directorate to make sure that partners' objectives are fed into Innovate UK's strategic planning and that the region has good access to – and alignment with – national innovation services. He works with businesses, universities, and the wider public sector to drive business impact through innovation programmes.



James joined Innovate UK in 2024, having previously worked at the Nuclear AMRC (part of the High Value Manufacturing Catapult) as their Regional Government lead. This built on his previous experience in local, regional, and parliamentary politics, notably as a strategic advisor and coordinator for the East Midlands Development Company and the leadership of Nottinghamshire County Council across two successive terms - specialising in economic development and strategic programmes.

Dr Katherine Freeman

Head of the Healthcare Technologies Theme at The Engineering and Physical Sciences Research Council

Katherine Freeman is the Head of the Healthcare Technologies Theme at The Engineering and Physical Sciences Research Council ([EPSRC](#)). She is responsible for developing healthcare technologies strategy and has been at EPSRC for the past 9 years having previously worked in a Cancer Biology research lab.



Dr Helen Compton

Stakeholder Engagement Manager for Innovations Programmes at NIHR Coordinating Centre

Helen joined the [NIHR CC](#) in 2016 to lead on stakeholder engagement activity with the charity and [MedTech communities](#) and provide leadership and delivery across several high profile strategic and operational projects across NIHR. Helen engages with SMEs, clinicians and charities to support MedTech innovators access the NIHR and wider life sciences ecosystem.



Helen gained an extensive background working at the science-policy interface in Defra (>9 yrs) across several high-profile government programmes. She commissioned R&D programmatic evidence that supported changes in both UK policy and international cooperation and has experience synergising research activity across government departments for domestic and international reporting. Helen has developed evidence supporting several national government strategies and presented evidence-based findings at all organisational levels and internationally to the OECD.

In the 5 yrs before joining NIHR, Helen developed extensive touchpoints across the UK public research infrastructure primarily around health and the sectors that impinge on it, whilst at the National Physical Laboratory. She contributed to a national measurement strategy for the UK on behalf of government and helped

government prioritise its chemical and biological metrology research funding to support emerging areas of UK measurement need necessary to support industrial growth.

Helen is interested in health innovation and MedTech and has advisory roles in:

- Board member to CW Innovation, the partnership between Chelsea and Westminster NHS Foundation Trust and the Trust's hospital charity, CW+
- Trustee Orthopaedic Research UK
- Member of the West Midlands Health Tech Innovation Accelerator Grants Committee
- Innovate UK assessor

Dr John Chevers

Technology Lead, Wellcome Trust

John Chevers is Technology Lead in the Data for Science and Health Team at the [Wellcome Trust](#) with a particular focus on Infectious Disease Research and the UK Data Landscape. He has held leadership roles in industry, the NHS and academia, specialising in the use of data and technology to facilitate research. Prior to working in the health sector, John led partnerships and commercial strategy for [GEANT](#), the pan-European internet for research and education. He holds a PhD in Physics and an MSc in electrical engineering.



Professor Simon Ball

Chair of HDR UK Midlands Strategy Board

Simon Ball is the Senior Responsible Officer for the West Midlands Secure Data Environment based at University Hospitals Birmingham NHS Foundation Trust. He is Associate Director of HDR UK Midlands and Chair of the Midlands Health Data Strategy Board.

Simon was responsible for establishing Health Data Research UK Midlands back in 2018 which created the foundations for bringing together the clinical and data science communities across both the East and West Midlands regions of England. He was also HDR UK's national research director for the Better Care scientific theme between 2018 and 2023.



Simon took up the role of Chief Medical Officer of University Hospitals Birmingham NHS Foundation Trust in 2019.

He trained in medicine at Oxford University and University College London, underwent postgraduate training in nephrology, dialysis and transplantation in North West London and was an MRC doctoral fellow in the Department of Biology at Imperial College.

He was appointed as Consultant Nephrologist at UHB in 2001, he has been Clinical Service Lead in Nephrology, an Associate Medical Director and Director of Digital Healthcare. He was President of the British Renal Society between 2013 and 2016. His contributions to research and innovation include collaborations with academic and industry partners seeking to understand and quantify immune response in transplantation.

Simon has an interest in the curation and analysis of high value health data assets and became Health Data Research UK Research Director in the Midlands in 2018. This was based on his longstanding contributions to

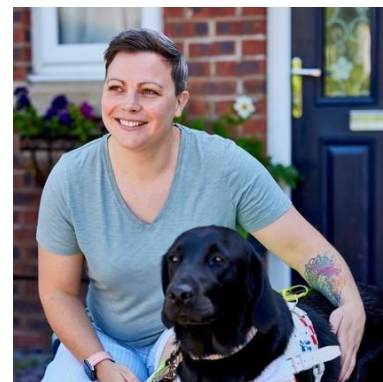
UHB's development and implementation of electronic health care records to improve the quality and effectiveness of patient care. This convergence of technology and quality management remained an important part of his previous role as Chief Medical Officer at UHB.

Claire Robotham

Patient & Public Representative from the East Midlands

Claire, from the East Midlands, has Usher Syndrome type 2 (Deafblind), she is also a partner, mother and has volunteered with guide dogs since 2013.

Claire was born deaf and attended mainstream schooling. This has equipped her with many skills needed for an inclusive world, as Claire is also an advocate for the Molly Watt Trust and is keen on sharing the awareness needed to keep today's society an inclusive and accessible one.



As Claire's eyesight deteriorated due to Retinitis Pigmentosa in her early 20s, she got her Guide Dog Minnie in 2013 after many years of freedom and independence as a partnership Minnie retired in 2020. Claire's current Guide Dog Jacqui who has taken over the reins from Minnie, supports her daily while Claire also works as a Community Fundraising Relationship Manager, for Guide Dogs.

Claire has experienced many hurdles and overcome them, she is experienced in public engagement and media. As a patient at Moorfield's and a participant of the 100,000 genome project, she brings an understanding of patient experience & genetic data as well as personal interest. She was a carer for her mother, who battled breast cancer over 8 years; something that taught her a lot about the hospital care system and recognising the importance of patient and family inclusion in all aspects of treatments and care.

Claire is not afraid of overcoming her disability and she regularly does so, proving that disability is not a barrier if accessibly and inclusivity is incorporated. She has worked with the NHS making them aware of accessibility flaws on simple tasks such as booking appointments and advised on improvements. She has also completed several endurance challenges to raise funds for a number of charities. Claire strives to make today's health care system inclusive and accessible for all.

Dr Ankeet Tanna

Consultant at Hardian Health

Ankeet is a medical doctor with experience in developing machine learning tools for healthcare. He leads the Clinical Team at [Hardian Health](#), where he has guided several successful regulatory clearances for cutting-edge AI medical devices in the EU, UK and US. He also advises investors in Health Tech and provides clinical input into health economic modelling and commercial strategy for digital health technologies.



Dr Tom Micklewright

Medical Director at ORCHA Health UK

Dr Tom Micklewright is a GP, Primary Care Digital Transformation Lead for Cheshire and Merseyside ICB and Medical Director at [ORCHA](#) the world's leading digital health distribution platform. Previously, Tom has held senior positions within the British Medical Association and helped lead one of Europe's largest telehealth providers to work with the NHS and to safely integrate with NHS clinical IT systems. His passion is digital patient empowerment and he writes and speaks internationally on the role of mhealth, particularly health apps, in supporting patients to self-manage and become equal partners in their health and care.



Dr Louise Hatherall

Research Fellow at the University of Birmingham

Dr Louise Hatherall is a Research Fellow at the [University of Birmingham Law School](#) having previously held roles at the University of Edinburgh and University of Bristol. She is broadly interested in how socio-legal empirical research can explore the intersections between health technologies, patents, regulation, and the public. She works on a number of projects, including the Wellcome funded '[Everyday Cyborgs 2.0](#)' project with Professor Muireann Quigley where she analyses the legal and social challenges of software as a medical device and the imagined regulatory futures of people with attached and implanted medical devices. She is a collaborator on the '[Coproducting a Diabetes Data Rights Charter](#)' (funded by BIIF, AHRC, and the Nightscout Foundation) which collaboratively develops a rights Charter with people with diabetes to enable them to, safely and securely, exercise control over their diabetes data in a manner which better meets their needs. She is also a collaborator on the IAS funded 'Psychedelics and Regulatory Decision-Making project' which maps the legal and regulatory landscape as it pertains to psychedelics as medicine. She is an alumni affiliate of the Centre for Technomoral Futures, University of Edinburgh.



Dr Robert Free

Lecturer in Health Data Science at the University of Leicester

Robert Free is a Lecturer in Health Data Science at the University of Leicester and the Director of Informatics for the [NIHR Leicester Biomedical Research Centre \(BRC\)](#) who has worked at the clinical interface between healthcare and technology for many years, with expertise in clinical informatics, software engineering, applied artificial intelligence/machine learning (AI/ML), molecular biology/genetics and bioinformatics.



His own research interests focus on the use of advanced data science (including AI/ML) to develop and translate models and technologies into smart data-driven tools for improving healthcare outcomes. He is particularly interested in the use and integration of complex data from different

disciplines for this purpose including ‘omics data, clinical data of different types (test results, coded observations, imaging) and mobile digital health data collection. Current projects he is leading include development of AI/ML-based models to predict community acquired pneumonia outcome from complex multi-faceted hospital admission data and generic approaches for embedding logical and AI/ML models into data-driven workflows to provide trusted/interpretable clinical decision support to healthcare workers.

Robert has supervised/supported informatics projects as technical lead and co-I within several high impact clinical studies and interdisciplinary initiatives, including the [East Midland Breathomics Pathology Node](#), the [Extended Cohort for E-health, Environment and DNA](#) and nationally important pandemic related projects including the UK Research study into Ethnicity and COVID-19 outcomes in Healthcare workers.

As Leicester BRC’s Director of Informatics, he oversees the BRC’s new Health Informatics Platform through which he aims to facilitate and develop exciting interdisciplinary research collaborations and partnerships in data science working with other BRCs and researchers locally, regionally and nationally.

Professor Jim Ang

School of Computing (Kent), Kent and Medway Medical School

Jim Ang is Professor at the University of Kent (Computing) and Kent and Medway Medical School, and Visiting Professor at Imperial College London’s National Heart and Lung Institute. His research focuses on human-centred digital health, exploring how AI, immersive media, and virtual human technology can support patient care, reduce health inequalities, and improve wellbeing. He co-directs the Institute of Cultural and Creative Industries (iCCi), where he leads the £14m Docking Station project, linking health, technology, and culture.



Professor Kia Nazarpour

Professor of Digital Health at the University of Edinburgh

Kia Nazarpour is a Professor of Digital Health at the University of Edinburgh and Co-founder and Chief Strategy Officer at Neuranics Limited, a deep-tech spin-out developing quantum TMR sensing solutions for health and consumer electronics applications. His research centres on wearable sensing and neurotechnology, with a core emphasis on developing methodologies to measure and analyse human movement across multiple length-scales. His work has received multiple international recognitions, including the Netexplo Award (UNESCO 2018) for the “Hand that Sees”. In his industry role, he accelerates the translation of these breakthrough technologies into scalable, real-world applications, earning Neuranics recognition with the CES Innovation Award (CES 2025), and the Best Healthcare & Wearable Solution Award (Sensors Converge 2025).



Jonaa Eva

Project and Outreach Senior Manager at the University of Nottingham

Jonaa Eva is a programme professional with experience in digital health, research, and innovation across the UK and Australia. Jonaa is currently the Project and Outreach Senior Manager at the University of Nottingham, leading outreach for the HDR UK Federated Analytics programme and supporting the adoption of health data solutions on national and international levels.

Before joining Nottingham, Jonaa worked at the University of Queensland, where he supported the Queensland Digital Health Centre by building programme capacity and collaborating with researchers, industry, and partners to deliver projects that advance healthcare innovation.



Chloe Ryder BSc(Hons), MSc, GMBPsS

Coventry Health Determinants Research Collaboration (HDRC)

Chloe Ryder, Research Fellow in Quantitative and Mixed-Methods working at Coventry Health Determinants Research Collaboration (HDRC), based at Coventry City Council. As a Research Fellow, Chloe is responsible for developing the data catalogue as part of Pillar 1 (Data and Governance) work, as well as being involved in research bid applications, developing research training, and designing mixed-methods service evaluations with teams within Coventry City Council. Chloe is also a Trainee Health Psychologist at University of Staffordshire, specialising in rare/under-diagnosed long-term conditions and quantitative research, with her latest research focussing on influential factors for nutritional intake for individuals living with Ehlers-Danlos Syndrome.



Kerry Oliver

Managing Director, PRIMIS at the University of Nottingham

Kerry Oliver has over 25 years of experience in primary care health informatics. She leads the PRIMIS service at the University of Nottingham, overseeing a wide range of projects on behalf of the NHS and the academic community. Her work focuses on harnessing primary care data to generate insights, drive change, and support the widespread adoption of healthcare innovations.



Dr Adam Webb

Senior Research associate, University of Leicester

Dr Adam Webb is a senior research associate at the University of Leicester. His background is in human medical genetics, having completed his PhD using both lab and bioinformatic approaches to explore human meiotic recombination and linkage disequilibrium. He has since worked on several medical bioinformatic projects including the databasing of human genetic variation and running the data management aspects of observational studies in COPD and on cancer radiotherapy side effects. His current research interests include genetically influenced circadian rhythms and the development of radiotherapy side-effects in breast and prostate cancer patients depending on the time of day when radiotherapy treatment is delivered. His research has described genetic variants in certain circadian genes which place subsets of patients into high or low risk groups for treatment at different times of the day. Dr Webb is also involved in EU-funded programmes using machine learning models integrating medical imaging, radiotherapy planning, clinical observations and genetics to predict which breast-cancer patients may be at elevated risk of developing arm-lymphoedema following radiotherapy. The outputs of these models form the basis of an explainable AI tool to advise patients of their predicted risk. Dr Webb also supervises a PhD student currently exploring AI techniques to monitor and predict changes in breast appearance following surgery and radiotherapy.



Dr Lisa Smith

CEO, Midlands Mind Forge

Dr Lisa Smith: Lisa is an award-winning investor and CEO of [Midlands Mindforge](#), a university founded co-investment company, established to invest & scale world-leading science & technology spinouts in the Midlands. Lisa has over 25 years global investment experience including 8 years at Unilever Ventures leading sustainable investment, and Unilever's IP-Spinouts.

Prior to her venturing career, Dr Smith was the first female Chief Engineer in Africa; at McKinsey she practiced lean operations across the consumer goods and tertiary care sectors in North America, UK, and Europe.

Dr Smith is passionate about people and planet; she created and launched a Pan-African green bond to address food security paired with a novel Agri-MBA for adoption of best practice.

Dr Smith is also an advisor and guest faculty for CISL (Cambridge Institute for Sustainability Leadership).



Joe Shearring

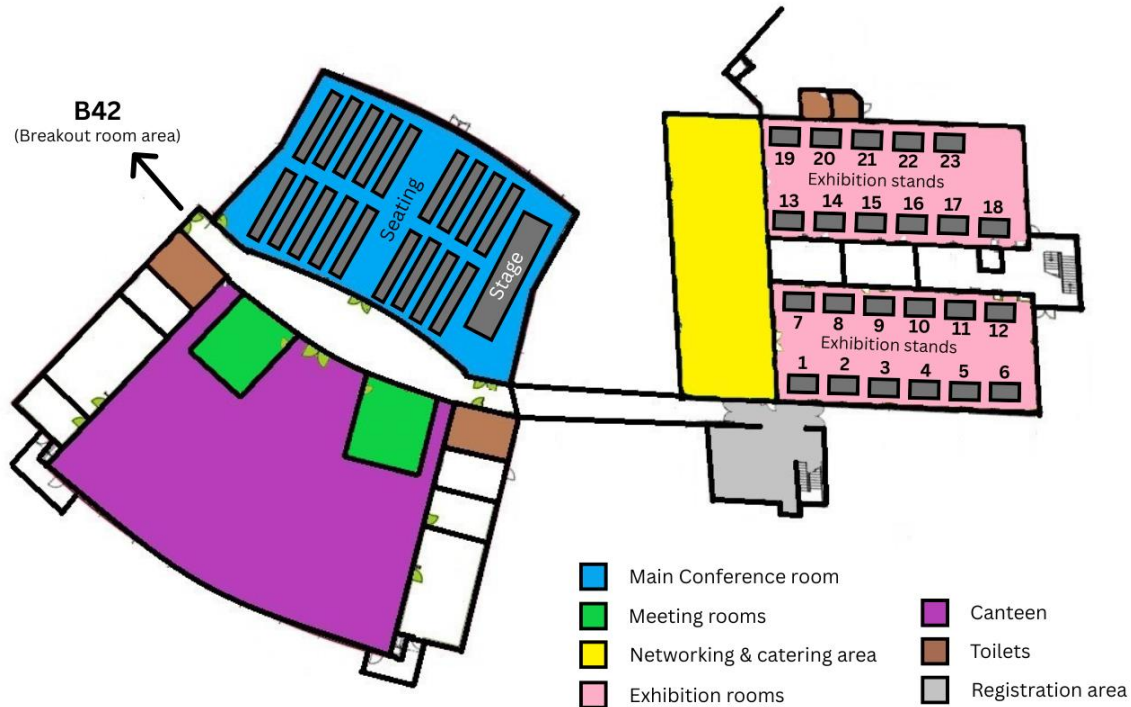
Head of Regional Engagement, working within EPSRC's partnership directorate, with a focus on the East Midlands. Aiming to help EPSRC to be an intelligent investor through engagement with relevant stakeholders. Previous experience leading a major/strategic bid development team within a research intensive university.



Conference Exhibitions

Exhibition Stand	Organisation/Network/ Programme	Website
1	Medilink Midlands	https://www.medilinkmidlands.com/
2	Health Innovation East Midlands	https://healthinnovation-em.org.uk/
3	iMed Consultancy	https://ukrp.org/
4	Tuli Health	https://tuli.health
5	PIONEER Health Data Research Hub	https://www.pioneerdatahub.co.uk/
6	DARE UK TR Evolution Project / UoN Digital Research Service	https://dareuk.org.uk/how-we-work/ongoing-activities/trevolution/
7	PATHWAY & West Midlands Secure Data Environment (WMSDE)	https://researchdata.uhb.nhs.uk/pathway-research-data-hub/ https://westmidlandssde.nhs.uk/
8	RENFREW GROUP INTERNATIONAL	https://renfrewgroup.com/
9	LS Scientific	https://www.lsscscientific.com/
10	Care Safe	https://caresafe.io/
11	South Asian Health Action UK	https://www.sahauk.org/
12	Gallaghers life science insurance solutions (<i>Friday only</i>)	https://www.ajg.com/uk/
13	Ellab UK Ltd	https://www.ellab.com/
14	These Hands Academy	https://www.thesehandsacademy.co.uk/
15	Avidity IP	https://avidity-ip.com/
16	ValidateLabs	https://validatelabs.co.uk/
17	The Real Birth Company	https://realbirthcompany.com/
18	JensonR+ Ltd	https://jensonr.com/
19	SMC Pneumatics (UK) Ltd	https://www.smc.eu/en-gb
20	LLR PATIENT CARE	https://llrpcl.co.uk/
21	Alm Translations (<i>Thursday only</i>)	https://www.almtranslations.com/
21	Eppendorf (<i>Friday only</i>)	https://www.eppendorf.com/gb-en/
22	The Department for Business and Trade	https://www.gov.uk/government/organisations/department-for-business-and-trade
23	Miha Bodytec EMS UK Ltd	https://www.miha-bodytec.com/

Conference Floorplan



WIFI

Username: Jayplas Guest

Password: jayplaswifi123

Photography

Please note that photography is taking place at this event for promotional and archival purposes. The photographs are likely to appear on our website and social media.

If you would prefer not to be photographed, please speak to a member of our team and let the photographer know.

For further information contact: hdr-midlands@contacts.bham.ac.uk

Continuing Professional Development (CPD)

Delegates can request a certificate of attendance to confirm their participation in this event. Please contact us at: hdr-midlands@contacts.bham.ac.uk for further details.



Code of Conduct

Please take a moment to review this information to help create an enjoyable environment for all conference attendees.

HDR UK Midlands is committed to fostering a safe, inclusive, and supportive atmosphere for all participants at the HDR UK Midlands Annual Conference 2025.

To contribute to this positive environment, delegates are expected to:

- Be respectful, courteous, and professional in all interactions. Listen to people and be respectful of differing viewpoints
- Celebrate the diversity of our community, demonstrate respect for individuals regardless of gender, sexual orientation, disability, race, nationality and religious beliefs
- Respect the privacy of those who prefer not to be photographed or have their slides captured.

Our conference team will be available throughout the event to address any concerns or discuss any instances of inappropriate behaviour. We value your co-operation in maintaining a respectful and harmonious conference.

Please be aware that any delegates not following the code of conduct may be asked to leave.

Our Conference Partners

Health Data Research UK: <https://www.hdruk.ac.uk/>

Health Data Research UK (HDR UK) is the national Institute for health data science. Our mission is to unite the UK's health data to enable discoveries that improve people's lives. Our 20-year vision is for large scale data and advanced analytics to benefit every patient interaction, clinical trial, biomedical discovery and enhance public health.

Midlands Health Alliance: <https://www.midlandshealthalliance.org.uk/>

The Midlands Health Alliance is the cluster organisation representing the National Institute for Health and Care Research (NIHR) infrastructure across the East and West Midlands. Led by the Biomedical Research Centres in Birmingham, Leicester and Nottingham, the MHA raise awareness of the world leading research infrastructure across the Midlands, their specialities, resources, and expertise, spanning the research pipeline from early phase clinical trials to applied health research. By working together the MHA maximise the impact of NIHR funding and our regional research outputs. Through knowledge transfer and collaboration we minimise duplication, amplify the spread and impact of best research practice and minimise research waste. We work with the public, partners, NIHR infrastructure, stakeholders and innovators to highlight our regional research offer.

Midlands Innovation Health (MI Health): <https://mihealth.org.uk>

Midlands Innovation Health (MI Health) coordinates and combines the collective excellence of 7 research intensive Midlands universities (Universities of Aston, Birmingham, Keele, Leicester, Loughborough, Nottingham and Warwick) to deliver improved population health and regional growth. MI Health works to position the cutting-edge medical and health-based innovations and research produced across the Midlands at the forefront of the UK. We also strive to create more large-scale collaborative activities across the partnership and with others.

Medilink Midlands: <https://www.medilinkmidlands.com/>

Medilink Midlands is a leading industry association representing the life sciences and medtech sector across the Midlands and East of England. With nearly two decades of experience, Medilink provides specialist business support to help companies overcome barriers to growth and boost the region's economic output from life sciences. Medilink Midlands connects businesses, academia, and healthcare partners, fostering collaboration and innovation. As a founding member of Medilink UK, it is part of a national network supporting over 3,000 companies, and plays a key role in influencing policy, securing investment, and championing the sector.

Charnwood Campus, Science, Innovation and Technology Park: <https://charnwoodcampus.com/>

Formerly Astra Zeneca Charnwood Research and Development centre, now a leading Science and Innovation Campus focusing on the biopharmaceutical sector. The first in the UK Life Sciences Opportunity Zone and a successful Enterprise Zone. Since its inception in 2014, Charnwood Campus has safeguarded or created over 800 science jobs in the region. Charnwood Campus has managed to attract and/or retain within the region a number of blue-chip organisations and several high growth SME's have relocated to Charnwood Campus: including Almac Group's drug development services, research, and manufacturing facility, 3M's Health Care business operations, Kindeva Drug Delivery System's manufacturing and R&D and Charnwood Molecular recently expanded medicinal chemistry and process research teams and related drug discovery service lines and will be relocating with recently acquired biology services company Aurelia Bioscience.

They have now 800+ scientists on-site and the Campus is helping to drive the flourishing life science cluster in the region, through the Business support programme and Talent and Skills Institute.

Our Conference Venue

We are delighted to hold our HDR UK Midlands Annual Conference 2025 at Charnwood Campus Science, Innovation and Technology park, situated in the heart of the UK. This Loughborough based science, technology and enterprise park offers world-class flexible laboratories, specialist manufacturing facilities and small and large office space with a wide range of amenities, technical and clinical resources that meet the diverse needs of businesses from a variety of sectors. Set in 70 acres of landscaped grounds, the park combines nature with modern facilities to create the ideal conditions for start-ups and established enterprises to grow their businesses.



Here's a summary with some interesting facts and figures:

- Once the AstraZeneca R&D centre, the site was repurposed starting in 2014 into a 70-acre science and innovation campus on the outskirts of Loughborough
- It holds the distinction of being the UK's first Life Sciences Opportunity Zone and is part of the Loughborough & Leicester Science and Innovation Enterprise Zone
- The park offers flexible, ready-to-occupy lab and office spaces, with over 12 acres of land available for future development
- Leading life sciences firms such as Almac, Kindeva, Solventum, and Charnwood Molecular are based here, benefitting from specialist environments, including MHRA-approved labs and GMP facilities
- Transport links are excellent: a 7-minute drive from Loughborough, M1 motorway nearby, Skylink Derby bus, plus 1,500+ free car parking spaces and EV charging

Acknowledgements

Firstly, we would like to thank our speakers, our chairs and our panel members who have helped us pull together such an exciting and varied programme for this years HDR UK Midlands Annual Conference.

We would also like to thank our exhibitors and our conference partners for their help in creating an environment that supports collaboration and allows ideas and inspiration to flourish.

It is also important that we recognise our organising team and our helpers, as a lot of planning, energy and hard work has gone into this. A heartfelt thank you to Eiman, Alex, Emma, Rob, Rivie, and Connie - your dedication, creativity, and teamwork have been the driving force behind making this event a success. Your commitment to excellence and the countless hours you've invested have not gone unnoticed. We are truly grateful for everything you've done to bring this vision to life.

We would like to show our appreciation to our delegates for their input into the conference. We have such talent across our region and it is important that we showcase this.

We must also thank HDR UK (our funder), for their leadership, advice and support for #HDRUKMIDS25. Today wouldn't have been possible without you.

Lucy, Johanna, Gosia and the team at Charnwood Campus, Science, Innovation and Technology Park (our venue) have been incredible and we have thoroughly enjoyed working with you.

And finally (but more importantly), we want to thank our patients and the public as to put it simply, you are the reason why we do what we do.

Evaluation and Feedback

We are always looking for ways to improve our HDR UK Midlands meetings and events.

We would be grateful if you could spare 2 minutes and complete our online feedback and evaluation form.

<https://forms.office.com/e/kB6aYUFn5U>

Your feedback will help us to shape and improve our future events.

HDR UK Midlands Annual
Conference 2025 - Evaluation

